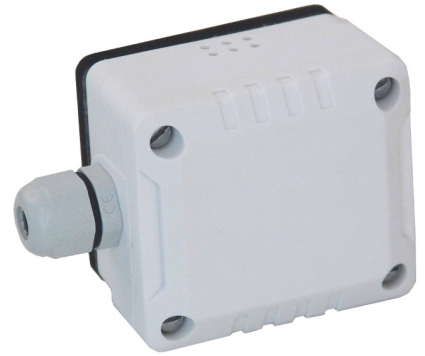


Description

Duct transmitter is applicable to all kinds of building automation, environment monitoring, HVAC systems. Product appearance is simple, direct connection terminals, convenient installation. Products use high performance embedded microprocessor, and high-precision sensors to meet all kinds of high precision, high stability of the temperature measurement requirements, and variety needs of different environments. Duct sensor / transmitter has current, voltage, 485 output signal to select, using 485 serial port output and Modbus communication protocol. It is commonly used in HVAC, electrical plant, environment monitoring, dynamic environment monitoring, agricultural environmental monitoring, meteorological environmental monitoring, environmental monitoring of biological pharmacy, airport, subway stations, hotel, museum, stadium, etc.



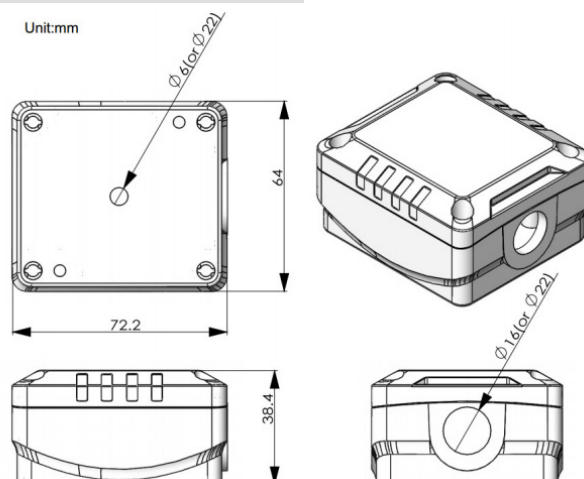
Hights

- Applicable to all types of air environmental monitoring
- HVAC systems
- Advanced circuit design, high accuracy, stable performance
- Appearance is concise, easy to install, cost-effective

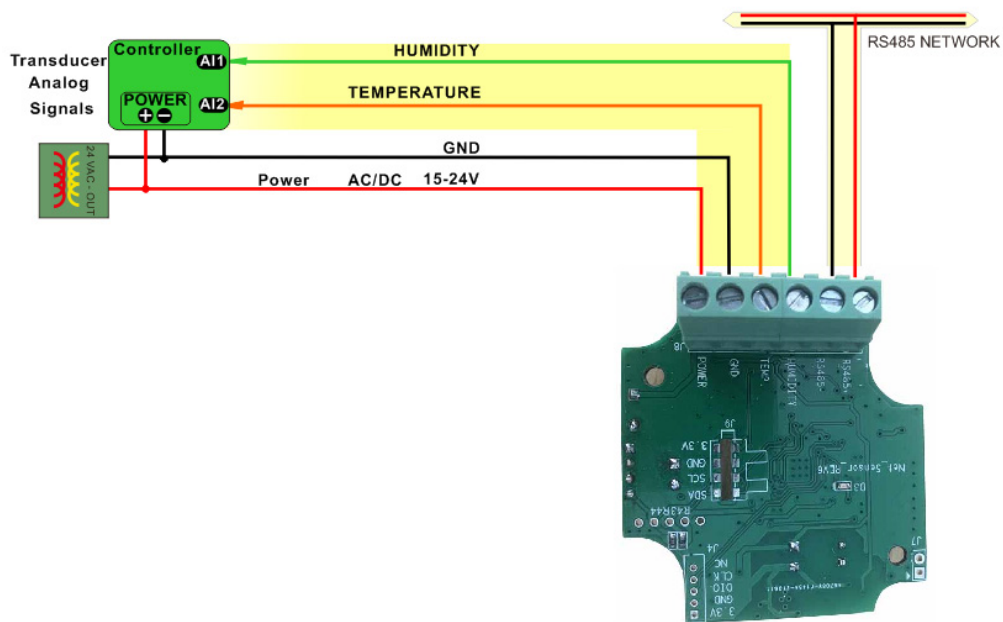
Specifications

| | |
|---------------------|--|
| Typical Application | Duct mount indoors |
| Output Signal Type | 4-20mA, 0-10V |
| Output Signal Drive | >500Ω for mA mode, 75mA, max output drive for voltage mode |
| Power | 15-24V+/-10% AC or DC, 1 Watt typical |
| Operating Temp | -30-60°C, 0-95% non condensing |
| Plastic Housing | Flammability rating UL 94V0 file E194560 |
| Size | 72.2mmX64mmX38.4mm |

Dimensions



Wiring Diagram



Modbus Register List

| Address | Register and Description |
|---------|--|
| 0 | Serial number |
| 4 | firmware Version |
| 6 | Modbus address |
| 7 | Prodouct model |
| 8 | Hardware version |
| 10 | 0...modbus, 1...bancet |
| 15 | baudrate 0:9600 1:19200 2:38400 3:57600 4:115200 |
| 17 | Switch5, 1=0.....10V,0=4.....20mA |
| 18 | Switch1-2,0=0-100,1=-20....80,2=0....50,3=-50.....50 |
| 19 | Switch3-4,0=dewpoint,1=enthalpy,2=absolute humidity,3=reasl humidity |
| 34 | SHT 35 temperature |
| 35 | SHT 35 humidity |
| 41 | Dew point value |
| 42 | Enthalpy value |
| 44 | Absolute humidity |