

Description

Temperatre sensor housing, stainless steel 304, 2”
probe length, 6mm dia



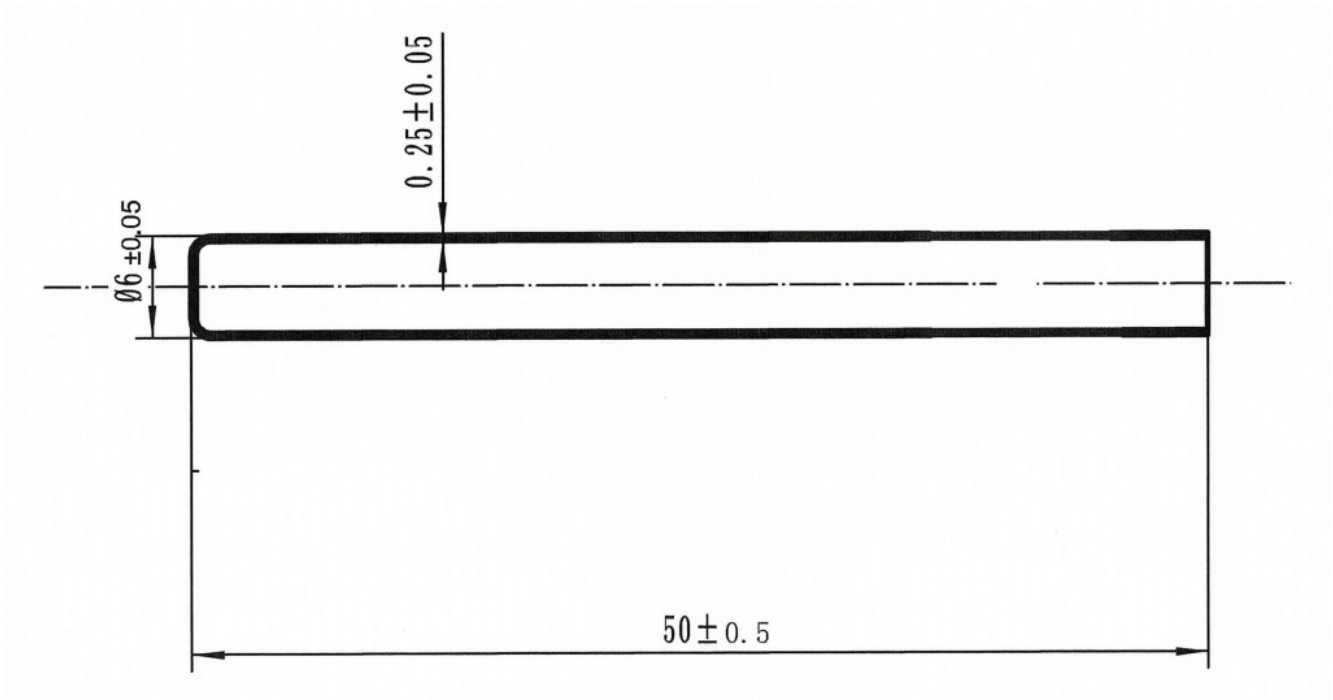
Features

- Easy to use
- Durable
- Good quality

Specifications

Material	SUS304L, SUS316L, copper, brass, aluminum and etc
Workmanship	deep drawing, welding, machining, polishing
Tube end shape	flat, round, tip
Tube shape	tube, tube with flange, tube with brass ring, terminal, bending tube, OEM
Size	it is 3mm--200mm for outer diameter. It is 5mm---400mm for length We could produce sensor housing according to customers' drawings
surface treatment	polishing, nickel plating, oxidation, galvanization.
application	temperature sensor, pressure sensor, speed sensor, thermocouple, instrument
certification	ISO9001 ,ROHS, REACH
OEM	accept

Dimensions



Part Number Scheme

TSH - S - R - 2

Code	Description
TSH	Temperature Sensor Housing

Code	Material
S	Stainless Steel 304
B	Brass
C	Copper
A	Aluminum

Code	Probe Length
2	2''(60mm)
3	3''(70mm)
4	4''(108mm)
6	6''(155mm)
8	8''(200mm)

Code	Tube end Shap
R	Round
F	Flat
T	Tip